

**HD 1080P IR Night Vision Clock
and
Wi-Fi Camera With Rotatable Lens**

User Manual



HAI2MPIRCLOCKW
HAI2MP33CLOCKW
www.ozspy.com.au

Contents

IR Night Vision Clock.....	3
330 Degree Rotatable Clock	3
Rotatable Lens by App Quick guide.....	4
Overview	5
Product instruction	6
Getting started with the clock	8
Getting started of Wi-Fi part	8
Set camera name and password	12
APP introduction	13
Set and watch by PC in LAN	15
Specification.....	18
FAQ	19


IR Night Vision Clock



330 Degree Rotatable Clock



Rotatable Lens by App Quick guide

1. Download Free App **Pro iCam** from App Store or Google Play.
2. Plug in power → Turn on device's backside ON/OFF button, wait for 2 minutes (Front blue light blink slowly);
3. Enter smartphone setting → Search and connect device's wifi named: YM....., wait till phone status bar appear Wi-Fi  symbol;
4. Enter APP, press top right "+" icon → Add new online camera → Search(LAN) → Select camera →
Press Ok → Camera Online then;
TIPS: 1. Please select **【Change】** to change device password for security **【default: 8888】** ;
2. This step = P2P mode, can check video locally when without Wi-Fi.
5. Press gear icon after camera → Device Settings → WiFi Config → Select your Wi-Fi → Input password → > Press Ok;
6. Quit APP, wait 30 seconds. Device will restart automatically and connect to your setted Wi-Fi (Front blue light always on then);
7. Enter APP to check live video locally or remotely anywhere.

P.S.: Contact local dealer for video guide setting up.

Overview

The HD 1080P Table Clock Security Wi-Fi Camera is a totally new design with BIG time display, firm housing table clock with an integrated smart & powerful 1080P Wi-Fi Camera.

First, it is a super simple table clock with time display only (12 /24 hour);

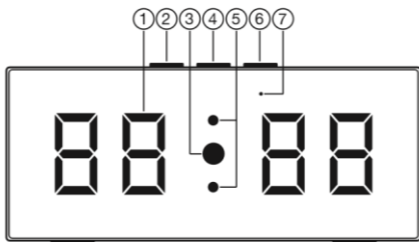
Second, it can be easily connected to Wi-Fi and watch live video, or remotely take photo and video by APP in smartphone anywhere in the world;

Third, it also supports Point to Point (P2P) function, connected by APP to smartphone for local live video without Wi-Fi.

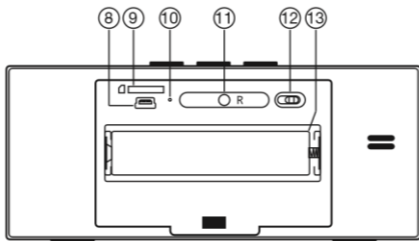
Fourth, the item also support motion detect alarm function, cycle recording and work when charging.

Usages: Nanny camera, Home/ Shop/ Office/ Warehouse surveillance camera.

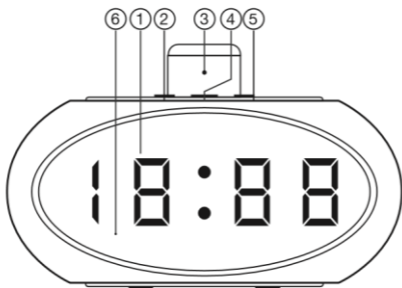
Product instruction



- ① Time display
- ② SET
- ③ Camera
- ④ UP
- ⑤ IR LED lights
- ⑥ DOWN
- ⑦ Wi-Fi indicator light

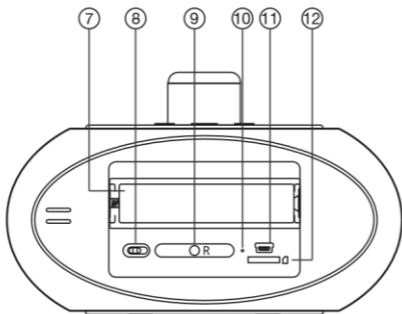


- ⑧ USB port
- ⑨ Micro SD card slot
- ⑩ Charging indicator light
- ⑪ Reset key
- ⑫ ON/OFF (For Wi-Fi Camera)
- ⑬ Battery



- ① Time display
- ② SET
- ③ Camera

- ④ UP
- ⑤ IR LED lights
- ⑥ DOWN



- ⑦ Battery
- ⑧ ON/OFF (For Wi-Fi Camera)
- ⑨ Reset key

- ⑩ Charging indicator light
- ⑪ USB port
- ⑫ Micro SD card slot

Getting started with the clock

Open back cover, remove the protective seal from the battery and plug it into AC power using the included adapter; Time display will be lighted on (Back red light always on).

Press SET to set hour/minutes;
Press UP to set 12/24 hour format.

Getting started of Wi-Fi part

Step1: Download and install APP

Scan below QR code or search and download free APP named “**Pro iCam**” in Apple APP store, Google play or Electronic market, and install it.




[Pro iCam] APP QR code



Step2: Connect power and turn on device

Remove the protective seal from the battery and plug it into AC power using the included adapter; Turn on backside switch, and wait for 2 minutes. (Front blue light blink slowly.)

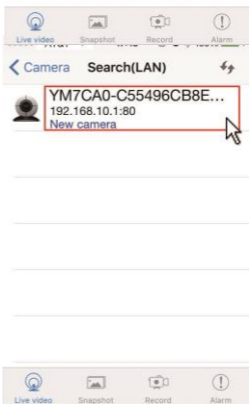
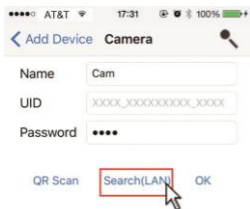
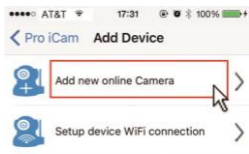
Step 3: Connect Wi-Fi


1. Open smartphone setting, search and connect mobile Wi-Fi to the device's wireless signal named "YM.....", wait Wi-Fi connected, and phone status bar appear Wi-Fi  symbol.

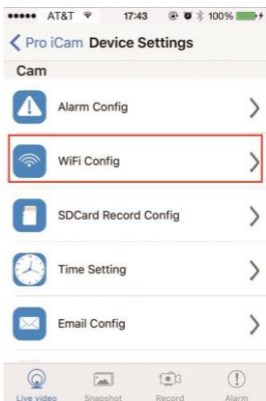
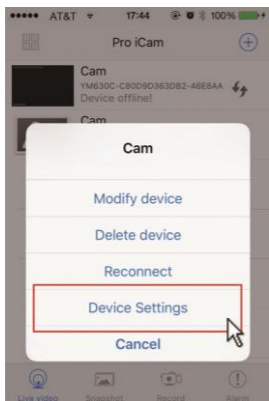


2. Open APP, press symbol + at the top right corner, select "Add new online camera" ; Search for new camera and press ok. Then back to the first page to see the live video of camera and do the following setting.

TIPS: 1. Please select **Change** to change device password for security **【default: 8888】** ;
2. This step = P2P mode, can check video locally when without Wi-Fi.



3. Press the gear icon  after the camera or long press the camera and select Device Settings, select Wi-Fi Config.




4. Select your Wi-Fi and input passcode, camera will be connected to your Wi-Fi. Your smartphone will disconnect the signal from device and connect to your Wi-Fi.

5. Quit APP, and device restart automatically and ready again in 30 seconds.

6. Enter APP and check live video locally or remotely anywhere. (Front blue light always on then).

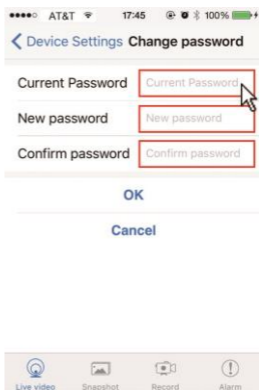
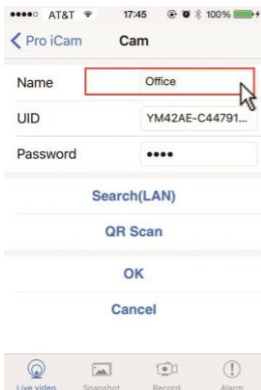
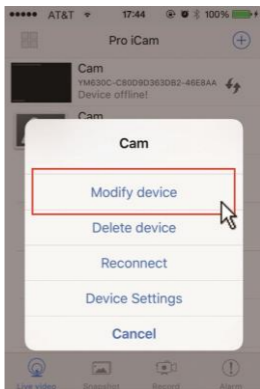


Set camera name and password

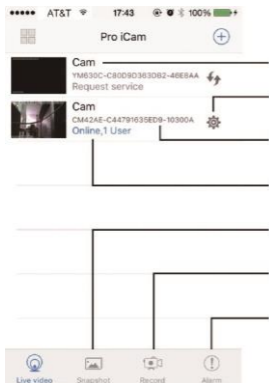
Set name: Press the  after the camera or long press the camera, select Modify device, select Name and revise name like Office, Room.....

Set code: Long press the camera and select Device Settings, select Change password.

Current one is 8888.



APP introduction



Camera name

Camera setting key

Camera UID

Camera online user number

Review snapshot pictures

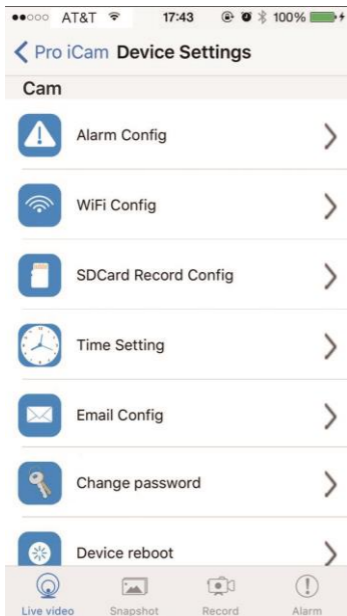
Review recorded videos

Alarm: Review alarmed pictures

Live video page - Click camera to check



TIPS: Oval Camera, slide left or right to rotate the lens



Set motion detection sensitivity / Alarm interval

Wi-Fi Config: Set camera Wi-Fi

Set SD card record mode / Resolution

Set time

Set motion alarm with email (Need turn on email alert first in alarm config)

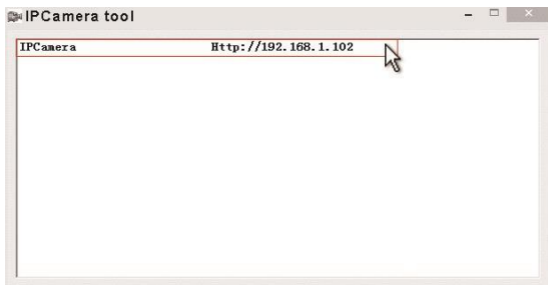
Change password:

Device reboot: Restore to factory default setting

TIPS: Each setting in Device Settings, please scroll down and press ok to save the setting.


Set and watch by PC in LAN

1. Once camera connected well with Wi-Fi, install software “IPCamera” from included CD and open software to find the connected device’s IP address.



2. Double click the IP address, insert name “admin” (no password) and press ok.



3. After above steps, you can insert setting interface. For first use, please choose language, then click  to download and install plug-in.

Welcome to Use IP Camera



Browser plug-ins

Recommended browser plug-in, support for real-time video and audio playback, compatible with Windows platforms common browsers.



iPhone, iPod touch and iPad



Mobile Phone (such as Android...)
Browser that supports Javascript.

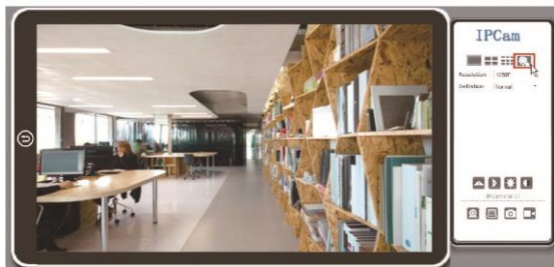


IE ActiveX Plug-in. Click to download

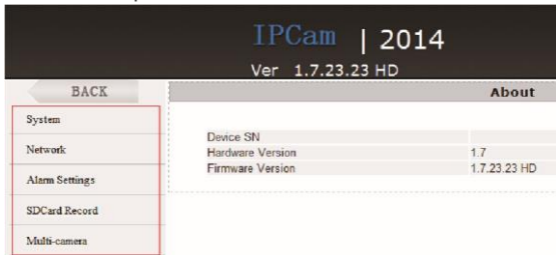


Language : English

4. Click  to go to the final setting interface.




5. Click left options to set other needed functions.



Specification

Video pixel in phone	Max 1920*1080
Video pixel in card	1080*720
Frames	Max 25fps
Compressed format	H.264
View angle	90°
Type of memory card	Micro SD/TF card >=Class 4/10 and HC marked
Maximum capacity of memory card	128GB
PC operation system	Windows 7, 8 / Mac OS X
Play software	VLCPlayer/SMPlayer
Mobile phone operation system	Android/iOS
Web browser	IE7 and above, chrome, firefox
Power consumption	300MA/3.7V
Recording	1 minute/ around 20MB
Working time	2-3 hours
Charging time	4-5 hours

FAQ

1. Q: Can it operate whilst charging?
A: Yes, please use a USB 5V 2A adapter to plug in power for permanent use (Back red light always on).
2. Q: Time display is not stable, always blinking?
A: It's a low battery, please charge it.
3. Q: Can't get device Wi-Fi signal? (Five solutions FYI).
A: 1). Please confirm the power adaptor connected;
2). Take out battery, then plug in power and wait 2 mins;
3). Press reset key for 5 seconds and wait 2 mins;
4). Turn off camera, then turn on again;
5). Turn off smartphone Wi-Fi for a while, then turn on to search again.
4. Q: Can't add or set camera after connected with camera Wi-Fi?
A: Please wait phone status bar appear Wi-Fi  symbol, then to do follow settings.
5. Q: Why live video screen shows up black and a searching circle spins in centre but nothing ever displays?
A: 1). If camera's connected Wi-Fi speed is slow, please wait 10-30 seconds for live video appear;
2). One click middle of screen, select top right 480p resolution to check.

TIPS: If local Wi-Fi speed is slow, please choose lower resolution for good video and audio.

6. Q: Live video not smooth and clear?

A: Select suitable resolution according to the real-time network environment.

7. Q: How many cameras can be added to APP?

A: No limit.

8. Q: How many visitors support to check live video?

A: 1-2

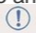
9. Q: Only 1 user, but show 2 or more users?

A: 1). If login in very often, last record is still in. If check every 2-5 mins, surely will be the exact numbers of users;

2). To be safe, please change camera's password when first use.

10. Q: Motion detect set and alarm?

A: 1). Set motion detect sensitivity in Device Settings - Alarm Config, and scroll down press OK;

2). When motion detected, camera will push a alarm message to your phone and take 3 pictures for checking in the APP [Alarm - ].



11. Q: Micro SD card instruction?


A: 1). Format card before inserting;

2). When backside switch is on, every time you insert micro SD card, it will record automatically;

3). Once connected, can set SD management in app [Advance Config - SD Card Record Config].

12. Q: How to play micro SD card video?

A:1). Use a card reader to read and play;

2). Use APP to play back [Record - ];

3). Play back in good speed network.

13. Q: After connected to Wi-Fi, how is the status of camera when Wi-Fi off?

A: 1). If modem off, camera can still check local view as it is connected directly to wireless router;

2). If both modem and router off, camera will keep searching the connected Wi-Fi and connect again;

3). If above point 2, not connect; Just turn off and on backside switch again to connect Wi-Fi.

14. Q: Camera can't hold set Wi-Fi, lost contact and offline?

A: 1). Make sure camera inside the range of good Wi-Fi signal;

2). Low battery, check if power adapter connected properly for long time use.

3). Make sure your phone network(4G/Wi-Fi)work well in remote area when checking the camera;

4).Please try to add with another phone which with good network.

15. Q: Forgot camera password, or item goes abnormal?

A: Turn on camera and wait for 2 minutes, press reset key around 5 seconds till front blue light off to restore factory default. Camera restarts and get ready again in 2 minutes.

16. Q: Connect camera with Wi-Fi by micro SD card setting?

A: Steps: (Format micro SD card first.) a, Create a txt file named Wi-Fi on the micro SD card

b, Input below format to the file

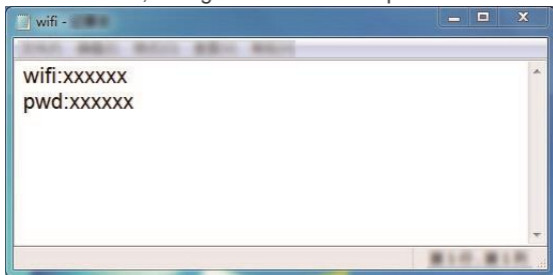
wifi:xxxxxx (Your local Wi-Fi name)

pwd:xxxxxx (Both are case-sensitive)

c, Insert the micro SD card when camera is OFF

d, Turn on camera, it will connect with your Wi-Fi in 10-15 seconds.

TIPS: Can also copy the txt file from camera's CD to the micro SD card, change Wi-Fi name and password.



17. Q: App content similar but not exact same as in manual?

A: App is always being optimized with better interface and functions.

18. Q: Any operation video demo of the camera for setting up?

A: Please contact local dealer for video guide.

The End!

